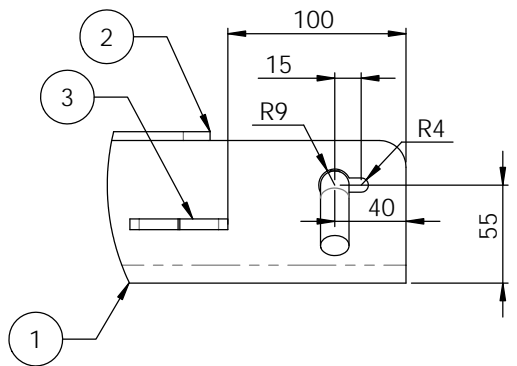
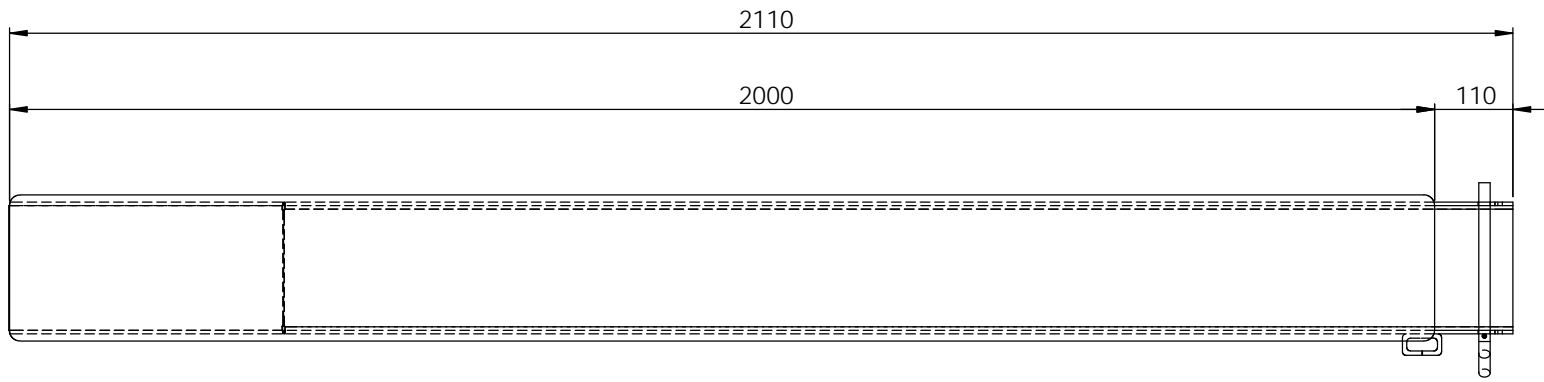
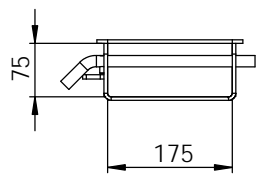
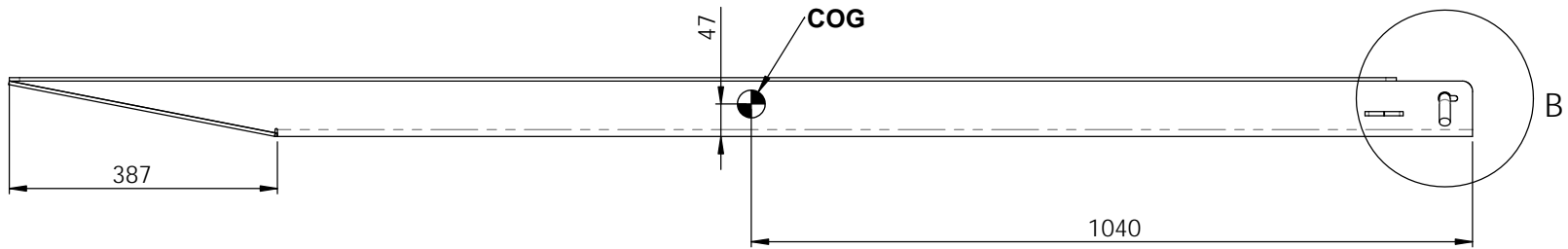


ITEM NO.	PART NUMBER	QTY.
1	BODY	1
2	TOP PLATE	1
3	6mm SPLIT LINK	1
4	RESTRAINT PIN	1
5	6mm x 25mm Roll Pin	1

TARE WEIGHT 44KG EACH



**DETAIL B
SCALE 1 : 3**



**D.O.T.
ENGINEERING**

1 / 57 PARAMOUNT DRV
WANGARA. 6065
WESTERN AUSTRALIA.

TEL: (08) 9302 4166
FAX: (08) 9302 4099

THIS DRAWING AND THE INFORMATION ON IT
REMAINS THE PROPERTY OF DOT ENGINEERING
WRITTEN PERMISSION MUST BE OBTAINED FROM
DOT ENGINEERING TO COPY OR REPRODUCE
THE WHOLE OR PART OF THIS DRAWING.

DRAWN	RM	TITLE 2000mm FORKLIFT EXTENSION SLIPPERS		
CHECKED		SIZE 4T PER PAIR	SCALE 1:7.5	DATE 23-Jul-12
APPROVED		PROJECT FORKLIFT ATTACH.	DWG 10361 - 1	REV 4