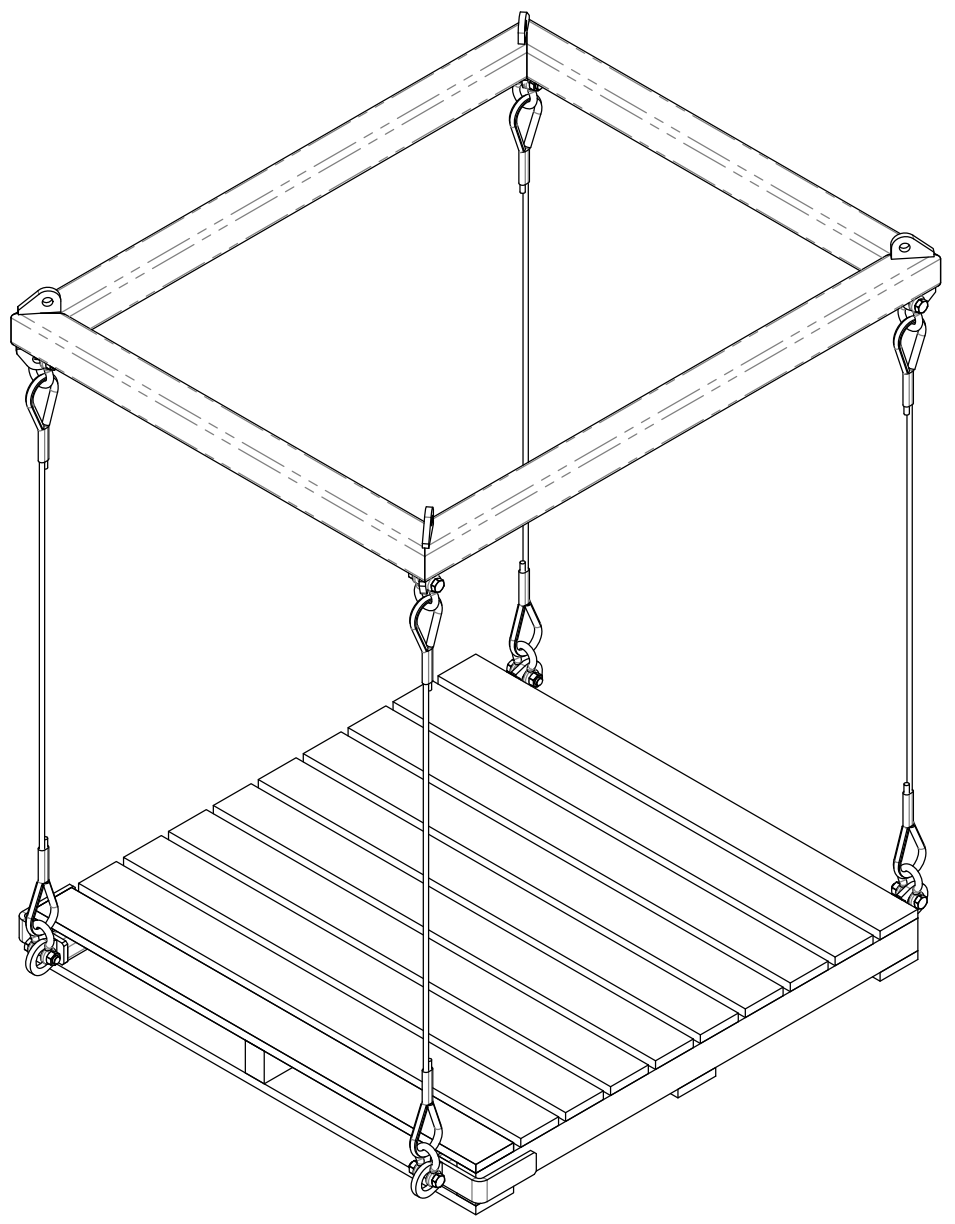
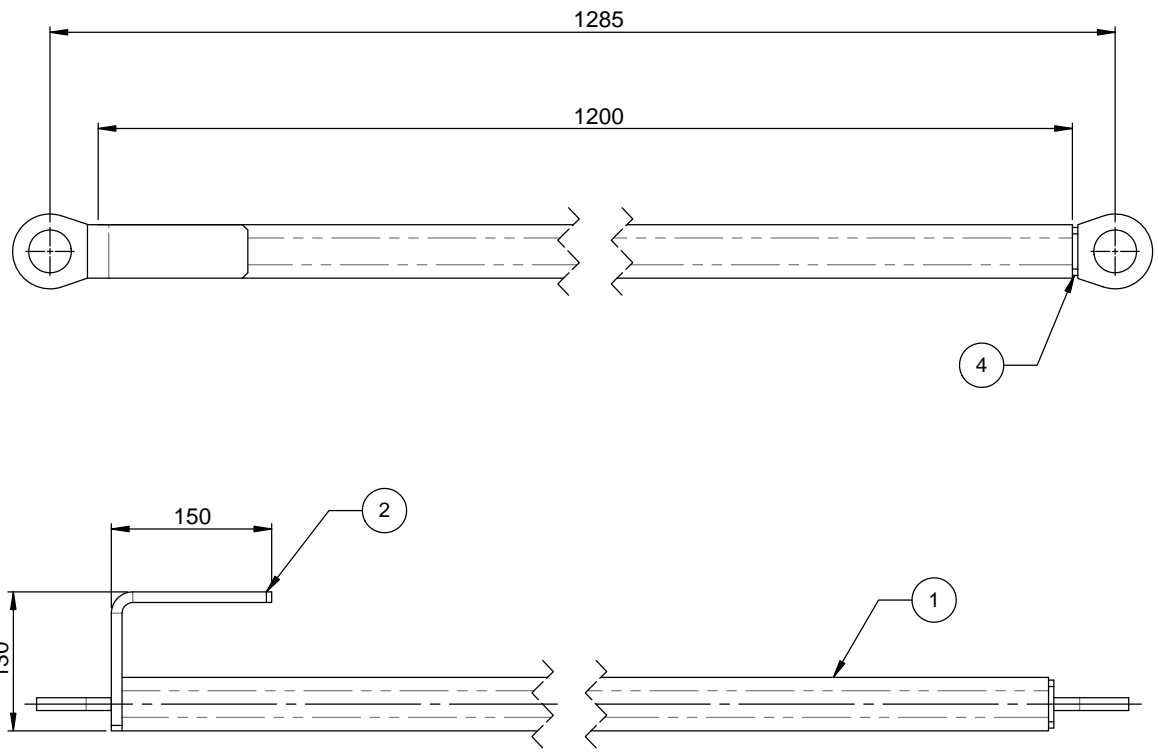


ITEM NO.	PART NUMBER	QTY.
1	10037-BODY	1
2	10037-PALLET HOOK	1
3	END CAP	
4	10037-LIFTING LUG	2

- NOTE:
1. ALL WELDING AS 1554.1 CAT SP
 2. ALL WELDS 5mm FILLET WELDS
 3. ALL STEEL PLATE TO COMPLY WITH AS3678
 4. ALL HOLLOW SECTION TO COMPLY WITH AS1163
 5. FINISH POWDER COATED GOLDEN YELLOW
 6. TARE WEIGHT 9 KG EACH
 7. PROOF LOAD & MARKINGS TO COMPLY WITH AS4991
 8. PALLET BARS ARE TO BE USED ONLY AS SHOWN



D.O.T.
ENGINEERING

1 / 57 PARAMOUNT DRV
WANGARA. 6065
WESTERN AUSTRALIA.

TEL: (08) 9302 4166
FAX: (08) 9302 4099

THIS DRAWING AND THE INFORMATION ON IT
REMAINS THE PROPERTY OF DOT ENGINEERING
WRITTEN PERMISSION MUST BE OBTAINED FROM
DOT ENGINEERING TO COPY OR REPRODUCE
THE WHOLE OR PART OF THIS DRAWING.

DRAWN	RM	TITLE	PALLET LIFTING BARS		
CHECKED		SIZE	2T PER PAIR	SCALE	1:10
APPROVED		PROJECT	PALLETS	DWG	10037 - 1
				DATE	20-Jun-12
				REV	0