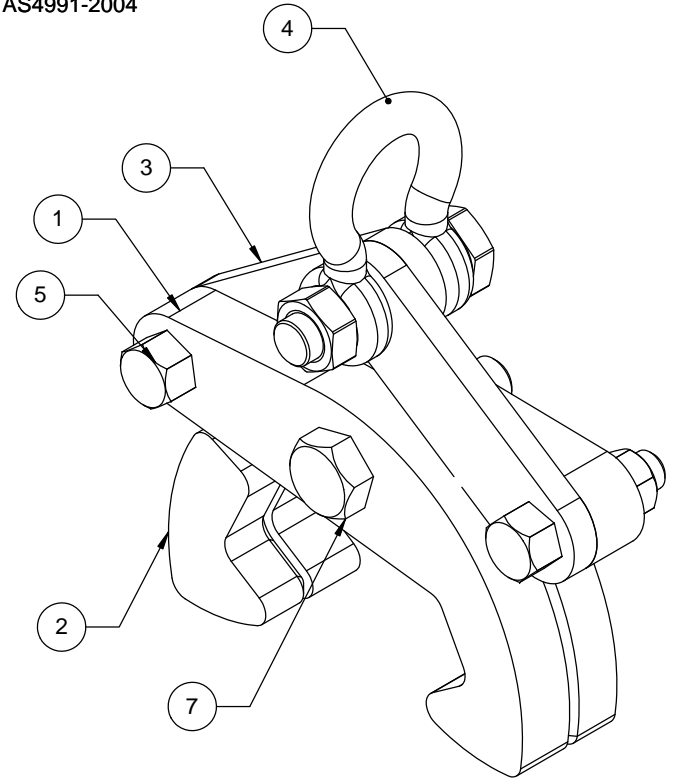
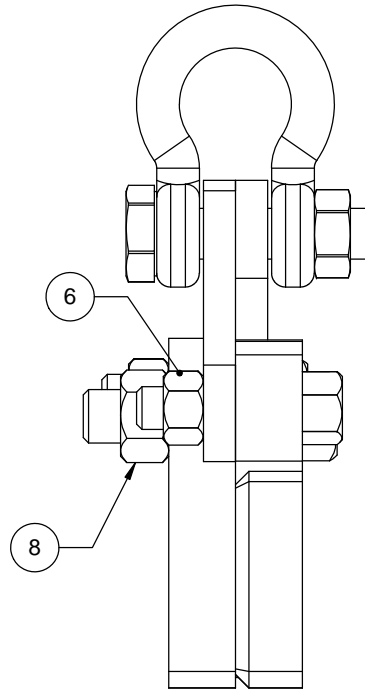


**NOTE:**

1. ALL WELDS TO AS1554.1 CAT SP
2. ALL WELDS TO BE 10mm C.F.W. UNLESS SHOWN OTHERWISE
3. ALL STEEL PLATE TO COMPLY TO AS3678 GR250
4. SURFACE FINISH TO CUSTOMERS SPEC.
5. TARE 7.5KG
6. PROOF LOAD AND MARKINGS TO AS4991-2004
7. TO SUIT AS68 RAIL



ITEM NO.	PART NUMBER	QTY.
1	BODY	2
2	PAD	2
3	LINK	2
4	3.25T GRD "S" SAFETY BOW SHACKLE	1
5	M16 x 75 GRD 8.8 BOLT CUT DOWN TO 62mm	2
6	M16 CONE LOCK NUT & FLAT WASHER	2
7	M20 x 100 GRD 8.8 BOLT CUT DOWN TO 82mm	1
8	M20 CONE LOCK NUT & FLAT WASHER	1

**D.O.T.**  
**ENGINEERING**

1 / 57 PARAMOUNT DRV  
WANGARA. 6065  
WESTERN AUSTRALIA.

**TEL: (08) 9302 4166**

**FAX: (08) 9302 4099**

THIS DRAWING AND THE INFORMATION ON IT  
REMAINS THE PROPERTY OF DOT ENGINEERING  
WRITTEN PERMISSION MUST BE OBTAINED FROM  
DOT ENGINEERING TO COPY OR REPRODUCE  
THE WHOLE OR PART OF THIS DRAWING.

DRAWN

RM

TITLE RAIL LIFTING TONG ASSEMBLY

CHECKED

SIZE 1.5T WLL

SCALE

1:2

DATE

13-Jun-11

APPROVED

PROJECT RAIL TONGS

DWG

10122 - 1

REV

1