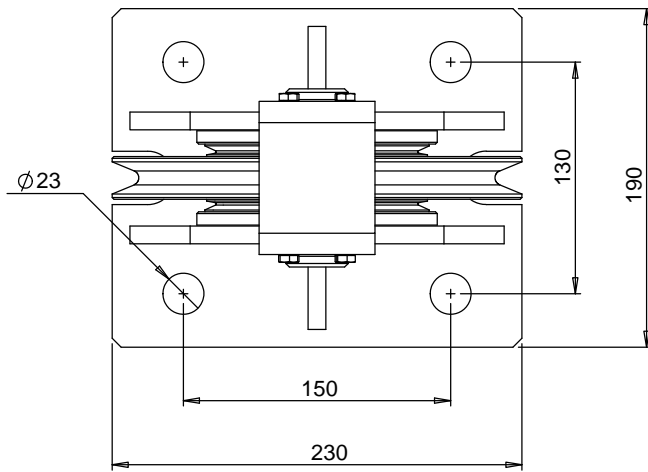
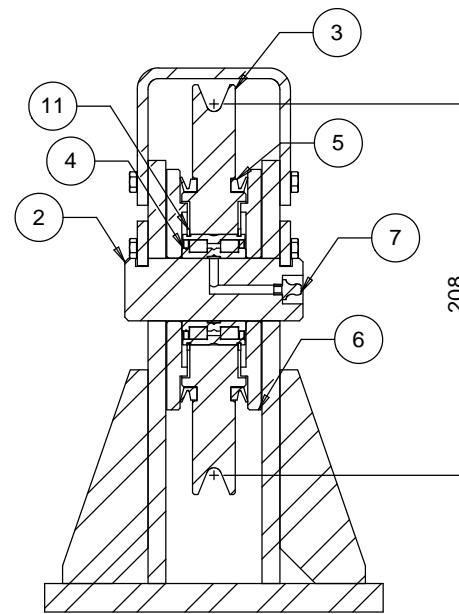
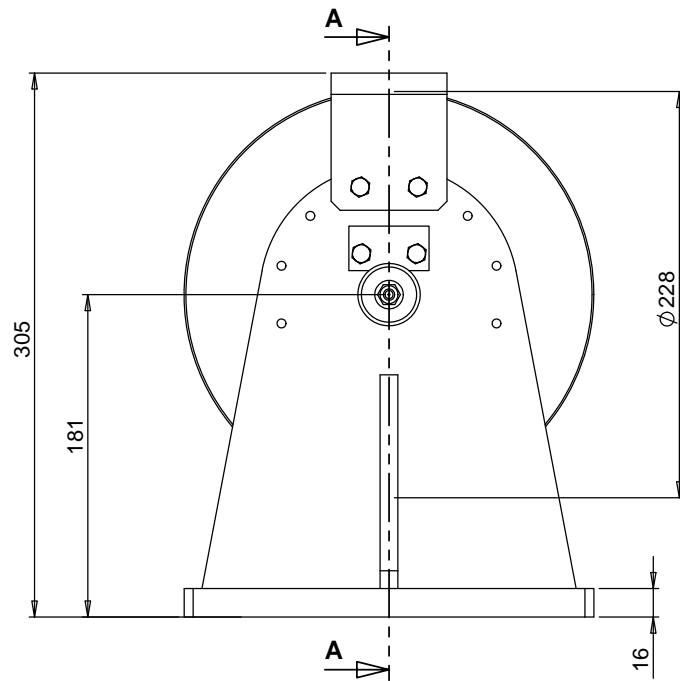


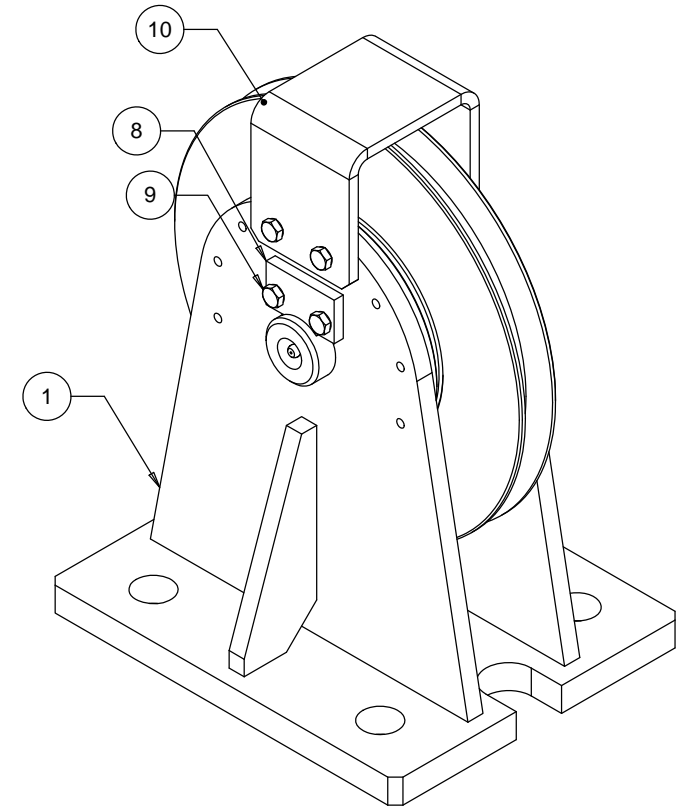
FINISH POWDER COAT PRIME DULUX E-PRIME 40-60um
TOP COAT DULUX DURALLOY FG SATIN 60-80um



- NOTE:
1. ALL WELDING TO AS 1554.1 CAT SP
 2. ALL WELDS 6mm CFW
 3. ALL STEEL PLATE TO AS 3678
 4. TARE WEIGHT 21KG



SECTION A-A



ITEM NO.	PART NUMBER	QTY.
1	FRAME	1
2	PIN	1
3	SHEAVE	1
4	BEARING INA/FAG SL045007-PP	1
5	VA-110 SEAL	2
6	LABRINTH PLATE	2
7	M6 x 1 GREASE NIPPLE	1
8	KEEPER PLATE	2
9	AS 1111.2 - M6 x 16 BOLTS	8
10	ROPE KEEPER	1
11	3200-60 RETAINING RING	2

D.O.T.
ENGINEERING

1 / 57 PARAMOUNT DRV
WANGARA. 6065
WESTERN AUSTRALIA.

TEL: (08) 9302 4166

FAX: (08) 9302 4099

THIS DRAWING AND THE INFORMATION ON IT
REMAINS THE PROPERTY OF DOT ENGINEERING
WRITTEN PERMISSION MUST BE OBTAINED FROM
DOT ENGINEERING TO COPY OR REPRODUCE
THE WHOLE OR PART OF THIS DRAWING.

DRAWN

RM

TITLE

200mm SHEAVE & FRAME 10mm WIRE ROPE

CHECKED

SIZE 200

SCALE

1:3

DATE

02-Dec-12

APPROVED

PROJECT SHEAVES

DWG

11193 - 1

REV

0