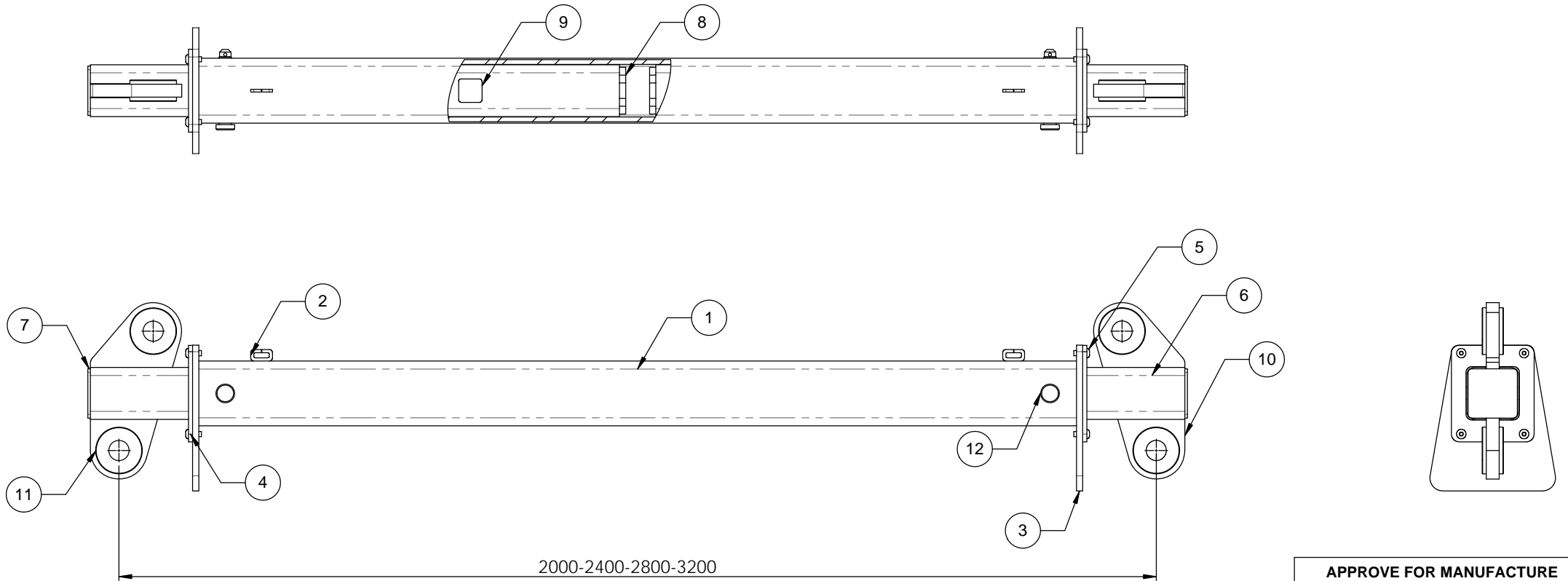


NOTE:

1. ALL WELDING TO AS 1554.1 CAT SP
2. ALL WELDS 6mm CFW
3. ALL STEEL PLATE TO AS 3678
4. ALL HOLLOW SECTIONS TO AS 1163 GRD350
5. 12T GRD "S" SAFETY BOW SHACKLE TOP & BOTTOM
6. SLING APEX ANGLE 60 DEGREES ALL POSITIONS
7. PROOF LOAD & MARKINGS TO AS 4991
8. TARE WEIGHT 101KGS

ITEM NO.	PART NUMBER	QTY.
1	BODY	1
2	SPLIT LINK	2
3	GUIDE PLATE	2
4	FRONT GUIDE PLATE	2
5	M10 x 25 BUTTON HEAD CAP SCREW	8
6	EXTENSION ARM	2
7	END CAP	2
8	END PLATE	2
9	STOP PLATE	2
10	END LUG	2
11	CHEEK PLATE	8
12	STANDARD LOCATION PIN FOR 125 SHS	2



APPROVE FOR MANUFACTURE	
PRINT NAME:	
SIGNATURE:	
DATE:	

**D.O.T.
ENGINEERING**

1 / 57 PARAMOUNT DRV
WANGARA. 6065
WESTERN AUSTRALIA.

TEL: (08) 9302 4166

FAX: (08) 9302 4099

THIS DRAWING AND THE INFORMATION ON IT
REMAINS THE PROPERTY OF DOT ENGINEERING
WRITTEN PERMISSION MUST BE OBTAINED FROM
DOT ENGINEERING TO COPY OR REPRODUCE
THE WHOLE OR PART OF THIS DRAWING.

DRAWN	RM	TITLE 2000-3200 EXTENDABLE SPREADER BEAM		
CHECKED		SIZE 20T WLL ALL POS.	SCALE 1:7.5	DATE 12-Jun-12
APPROVED		PROJECT BEAMS	DWG 11164 - 1	REV 0