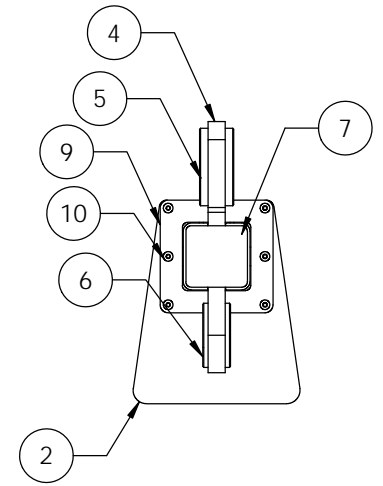
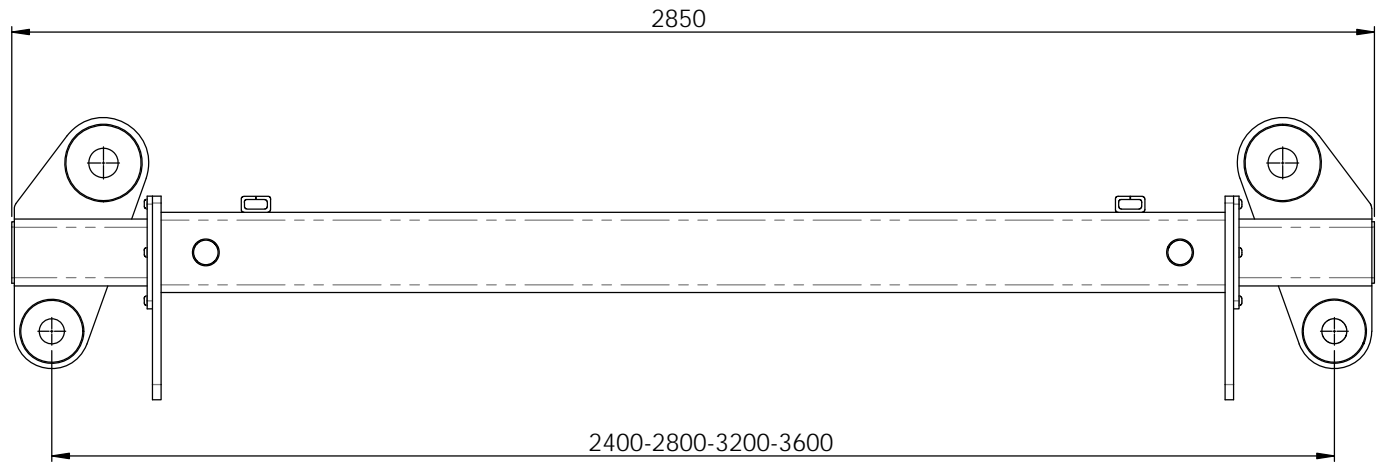
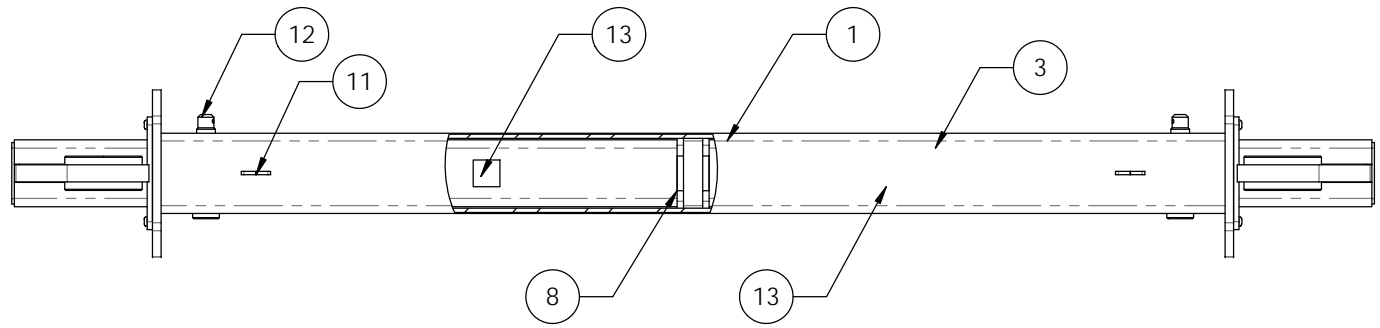


NOTE:

1. ALL WELDING TO COMPLY WITH AS1554.1 CAT SP
2. ALL WELDS 8mm CONTINUOUS FILLET WELDS
3. ALL STEEL SECTION TO COMPLY WITH AS1163 GRD350
4. ALL STEEL PLATE TO COMPLY WITH AS3678
5. LIFTING SLING APEX ANGLE 60 DEGREES
6. 25T WLL GRD "S" SAFETY BOW SHACKLES TOP
7. 17T GRD "S" SAFETY BOW SHACKLES BOTTOM
7. FINISH POWDER COAT GOLDEN YELLOW
8. TARE WEIGHT 185 KGS
9. LOCATION PIN & LYNCH PIN TO BE CHAINED TO BEAM
10. PROOF LOAD & MARKINGS TO COMPLY WITH AS4991-2004

APPROVE FOR MANUFACTURE
PRINT NAME:
SIGNATURE:
DATE:

ITEM NO.	PART NUMBER	QTY.
1	OUTER BEAM	1
2	GROUND PLATE	2
3	INNER BEAM	2
4	END LUG	2
5	CHEEK PLATE TOP	4
6	BOTTOM CHEEK PLATE	4
7	END CAP	2
8	INNER GUIDE PLATE	2
9	OUTER GUIDE PLATE	2
10	M10 x 25 BUTTON HEAD SCREW	18
11	6mm SPLIT LINK	2
12	LOCATION PIN	2
13	STOP PLATE	2



**D.O.T.
ENGINEERING**

1 / 57 PARAMOUNT DRV
WANGARA. 6065
WESTERN AUSTRALIA.

TEL: (08) 9302 4166

FAX: (08) 9302 4099

THIS DRAWING AND THE INFORMATION ON IT
REMAINS THE PROPERTY OF DOT ENGINEERING
WRITTEN PERMISSION MUST BE OBTAINED FROM
DOT ENGINEERING TO COPY OR REPRODUCE
THE WHOLE OR PART OF THIS DRAWING.

DRAWN

RM

TITLE 2400-3600 EXTENDABLE SPREADER BEAM

CHECKED

SIZE 30T WLL ALL POS.

SCALE 1:10

DATE 14-Feb-14

APPROVED

PROJECT BEAMS

DWG 11355 - 1

REV 0