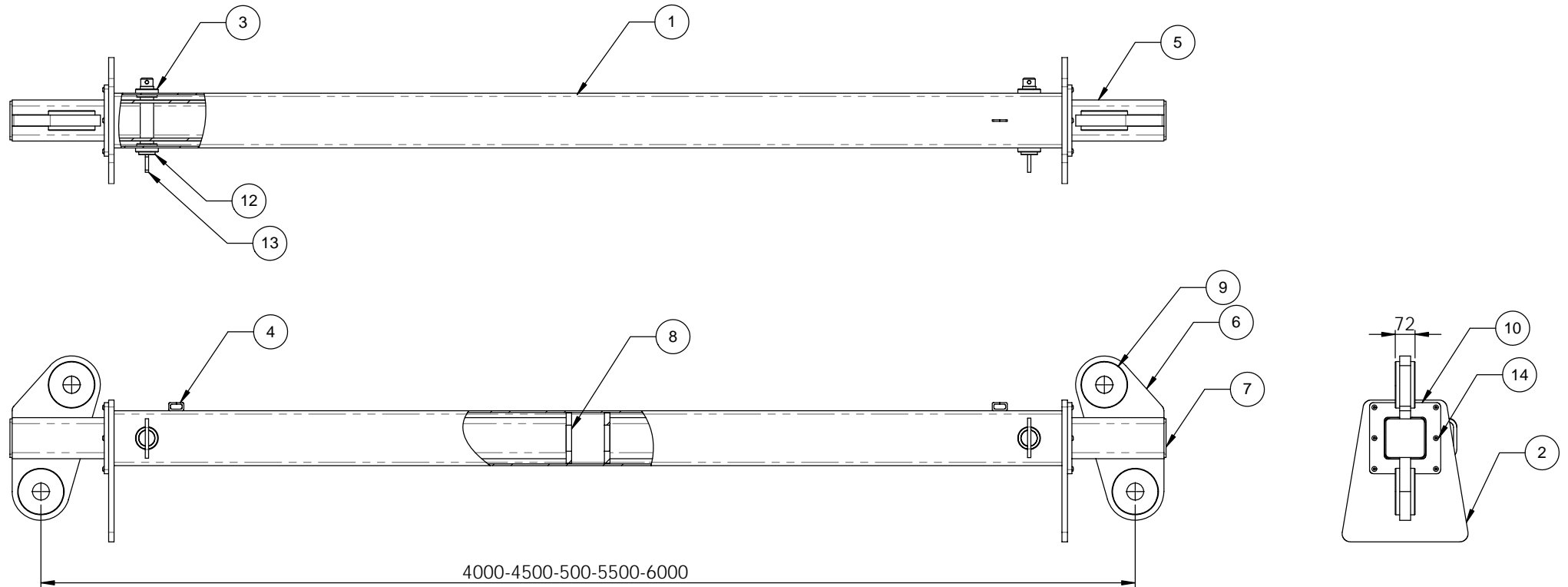


APPROVE FOR MANUFACTURE
PRINT NAME:
SIGNATURE:
DATE:

- NOTE:
1. ALL WELDING TO COMPLY WITH AS1554.1 CAT SP
 2. ALL WELDS 8mm CFW
 3. ALL HOLLOW SECTION TO COMPLY WITH AS1163 GDR350
 4. ALL STEEL PLATE TO COMPLY WITH AS3678
 5. TARE WEIGHT 455KG
 6. PROOF LOAD & MARKINGS TO COMPLY WITH AS4991-2004
 7. SLING APEX ANGLE 60 DEGREES ALL POSITIONS
 8. FINISH POWDER COAT SAFETY YELLOW
 9. 35T GRD "S" SAFETY BOW SHACKLES TOP & BOTTOM

ITEM NO.	PART NUMBER	QTY.
1	11320-OUTER BEAM	1
2	GROUND STAND	2
3	11320-LOCK PIN BUSH	4
4	11320-6mm SPLIT LINK	2
5	11320-INNER BEAM	2
6	11320-LUG	2
7	11320-END CAP	2
8	11320-END PLATE	2
9	11320-CHEEK PLATE	8
10	11320-GUIDE PLATE	2
11	11320-50 x 10 FLAT BAR	2
12	11320-LOCATION PIN	2
13	11320-HANDLE FOR 50mm PINS	2
14	M10 x 35 BUTTON HEAD CAP SCREW	18



D.O.T.
ENGINEERING

1 / 57 PARAMOUNT DRV
WANGARA. 6065
WESTERN AUSTRALIA.

TEL: (08) 9302 4166

FAX: (08) 9302 4099

THIS DRAWING AND THE INFORMATION ON IT
REMAINS THE PROPERTY OF DOT ENGINEERING
WRITTEN PERMISSION MUST BE OBTAINED FROM
DOT ENGINEERING TO COPY OR REPRODUCE
THE WHOLE OR PART OF THIS DRAWING.

DRAWN	RM	TITLE 4000-6000 EXTENDABLE SPREADER BEAM		
CHECKED		SIZE 50T WLL ALL POS.	SCALE 1:15	DATE 21-Nov-13
APPROVED		PROJECT BEAMS	DWG 11320 - 1	REV 0